



Power in Partnership

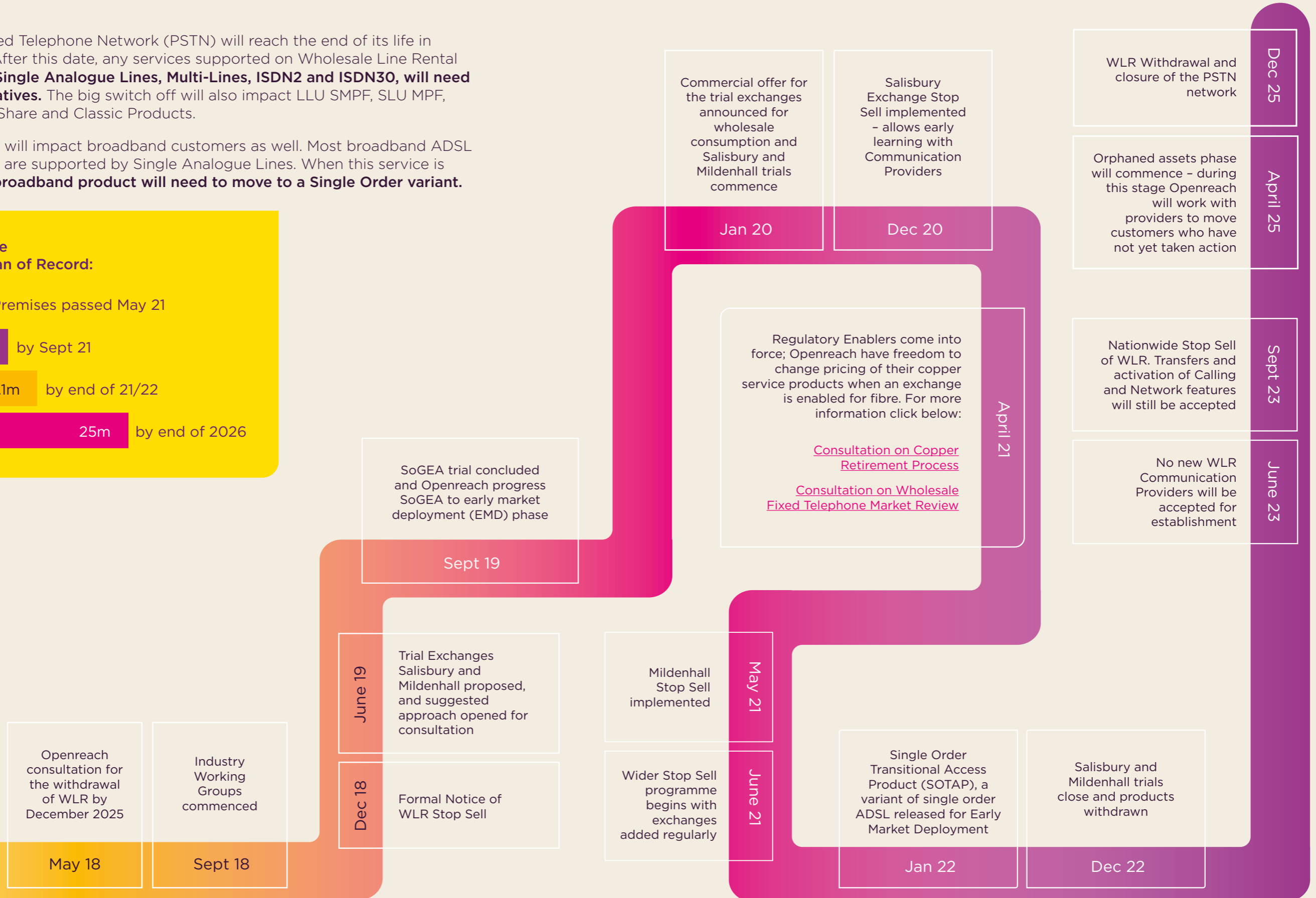
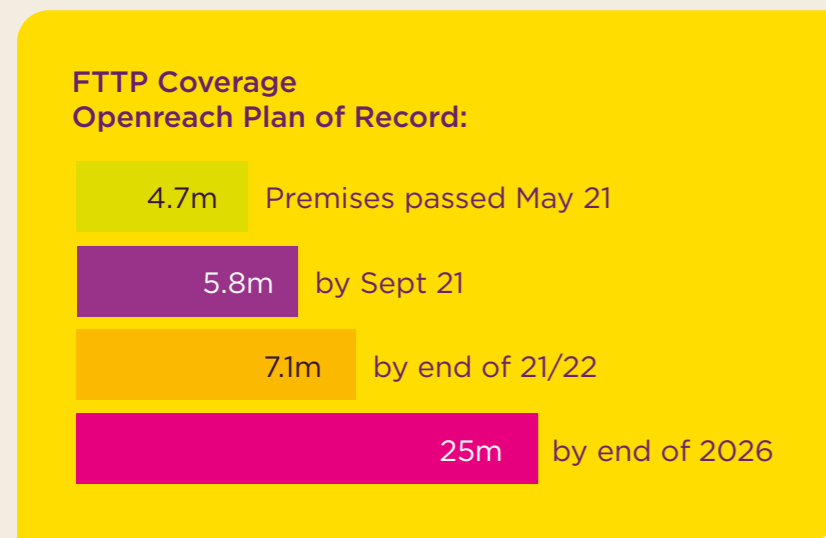
PSTN WITHDRAWAL FTTP EXCHANGE RESOURCE PACK

V3.3 02/08/21



The Public Switched Telephone Network (PSTN) will reach the end of its life in December 2025. After this date, any services supported on Wholesale Line Rental (WLR), including **Single Analogue Lines, Multi-Lines, ISDN2 and ISDN30, will need to move to alternatives.** The big switch off will also impact LLU SMPF, SLU MPF, Narrowband Line Share and Classic Products.

The Big Switch off will impact broadband customers as well. Most broadband ADSL and FTTC services are supported by Single Analogue Lines. When this service is switched off, **the broadband product will need to move to a Single Order variant.**



THE STOP SELL POLICY

The Stop Sell Policy - Trigger for Stop Sell

- > Exchange will have more than 75% Ultrafast Coverage* based on premises with Customer Ready for Service (CRFS) availability
- > Exchange coverage is determined against Total Network Address Points (NAD Keys) within the exchange



*GFAST with speeds over 300mb + FTTP

Timing of Stop Sell

- > Stop sell will be notified once an exchange has over 75% of Customers Ready for Service (CRFS) Ultrafast enabled or when there is a high guarantee that the exchange will reach 75% within 12 months
- > Openreach have, as of June 2020, identified **117 exchanges** that they believe will reach 75% fibre availability by June 2021 so have issued 12 months' notice to Stop Sell Copper products in these exchanges. [See FTTP Exchanges from page 16.](#)
- > Openreach have also added an **additional 51 exchange locations** as of the 5th October 2020. These 51 exchanges will have the STOP SELL policy applied as of the 5th October 2021.
- > Openreach have also added an **additional 51 exchange locations** as of the 4th January 2021. These 51 exchanges will have the STOP SELL policy applied as of the 4th January 2022.
- > Openreach have also added an **additional 77 exchange locations** as of the 29th April 2021. These 77 exchanges will have the STOP SELL Policy applied as of the 29th April 2022.
- > Openreach have also added an **additional 86 exchanges** as of the 2nd August 2021. These 86 exchanges will have the STOP SELL Policy applied as of the 2nd August 2022.
- > If the trigger point of over 75% CRFS cannot be met within 12 months the stop sell will not be implemented until that exchange reaches 75% (which may take longer than 12 months)
- > Further exchanges may be added at any time and the programme will be constantly reviewed by Openreach

How will I find out if my customers are situated within any of the targeted exchanges?

Please liaise with your Account Manager for more information

Stop Sell Policy and Product Scope

Stop sell applies at a **premises** level only where that premise has access to an available GEA-FTTP product. Where a premise has access to FTTP there will be no new supply of other products, CP Transfers, working line takeovers, addition of broadband to voice lines, bandwidth modifications, start of stopped lines or migrations to non-Ultrafast products.

- > If a premise has GEA-FTTP available to order, then **only** GEA-FTTP is available to that premise and instantly become within the scope of stop sell
- > If a premise **does not** have GEA-FTTP available, SOGFAST, SOGEA, GEA-FTTC, SOTAP (where no fibre is available), MPF & WLR (only until September 2023) will be available

The same Stop Sell principles will apply for the fibre exchanges as the Salisbury trial exchange (note: the stop sell principle matrix has changed as a result) see below.

Considerations will also be given to investment policies in the copper network which may include VDSL Cabinet capacity and repairs of the copper network.

Order Journeys	If the premise Is ENABLED for FTTP	If the premise is NOT ENABLED for FTTP
<ul style="list-style-type: none"> > Existing product at a premise > New premise 		
WLR/ MPF and SLU MPF Provision including new supply, transfers and working line take over etc.	Restricted	No Change - this will follow nationwide Stop Sell in September 2023. If the premise has availability for Single Order products such as SOGEA. This should be chosen over WLR + FTTC.
WLR/ MPF and SLU MPF Modify that increase the asset base (including increase and decrease of channels)	Restricted	
LLU-SMPF, SLU-SMPF and FTTC Provision and Modify	Restricted	
SOTAP and MPF Provision, Speed Upgrade and Modify	Restricted	
Non Standard Lines (non served premises, short duration lines and hot sites)	No change until available on FTTP	

Remember Stop Sell is to ensure your base doesn't grow prior to the products being withdrawn. Where possible provide Single Order Products like SOGEA or FTTP.
[For more information about these products see from page 8.](#)

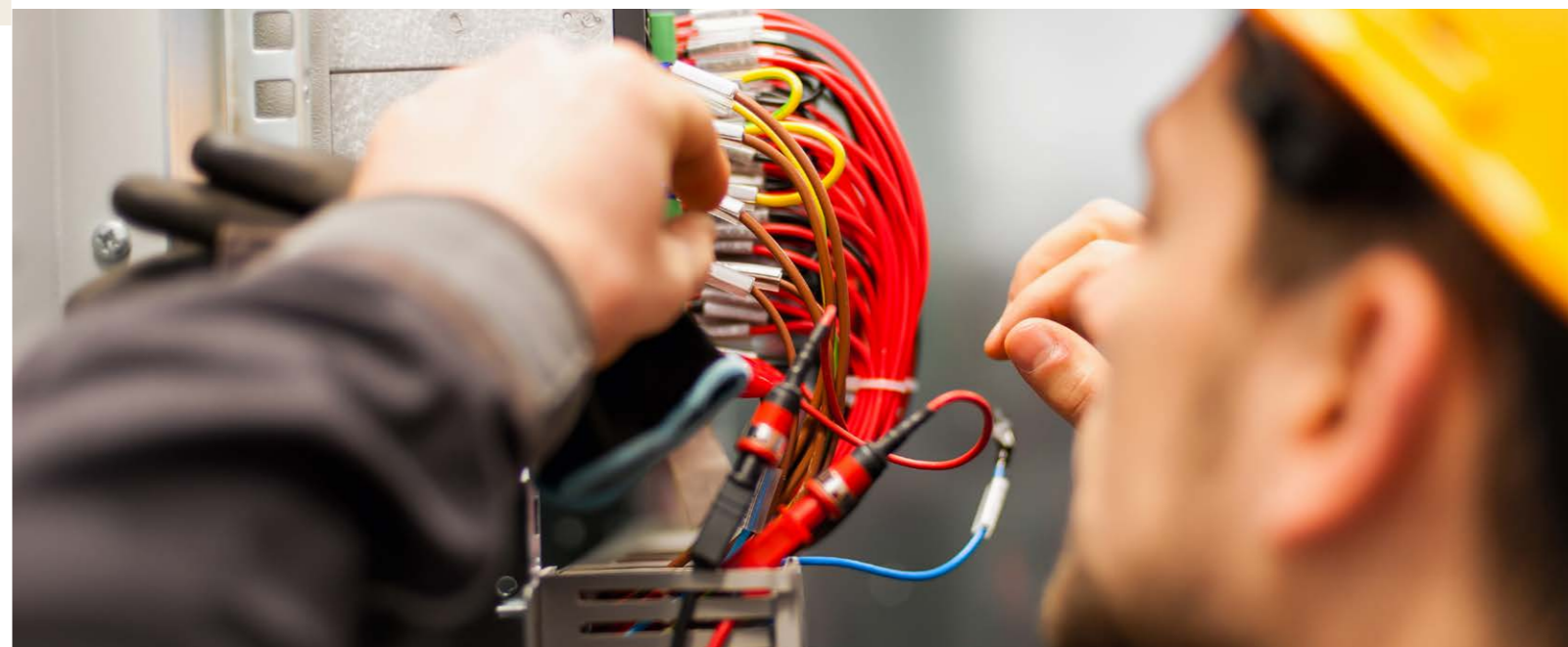
No move Back to Copper

In addition to stop sell - once a premise moves to FTTP a "no move back to copper" policy from the date of the stop sell notification being issued will come into effect. In this situation, the same stop sell situations would apply to that premise.

This will only come into effect from April 2021 (subject to regulatory enablers) and be applied at that point to premises with working FTTP lines that have had stop sell notifications published up to that date and onwards.

If there is a no move back to copper in place on FTTP deployments - what happens if my customer loses a analogue service they really need and didn't tell us about?

Openreach are looking to be able to provide a Rapid Reversion Process where there is a threat to life. Always ensure your following best practise guidelines.



Your Checklist

Check your customer base data to see who is affected in these exchanges (DWS can assist with this: help us by helping you become an Early Innovator)

Implement the Best Practice Guidelines into your point of sale and operational activities

Check and update customer contracts - your customer contracts could need to be updated to reflect the withdrawal of WLR products.

Review your commercial terms - some providers offer free installations and transfers but keep in mind that some of these customers may need to move prior to the end of their term.

Tell your customer what is happening - we have provided white labelled correspondence if you wish you to utilise this

Liaise with your customers to;

Understand their mission statement for the future (Single Use Broadband required or are Voice services required too - HVS/VOIP)

Do they fall under the CNI (Critical National Infrastructure) or have CNI functions connected to their service?

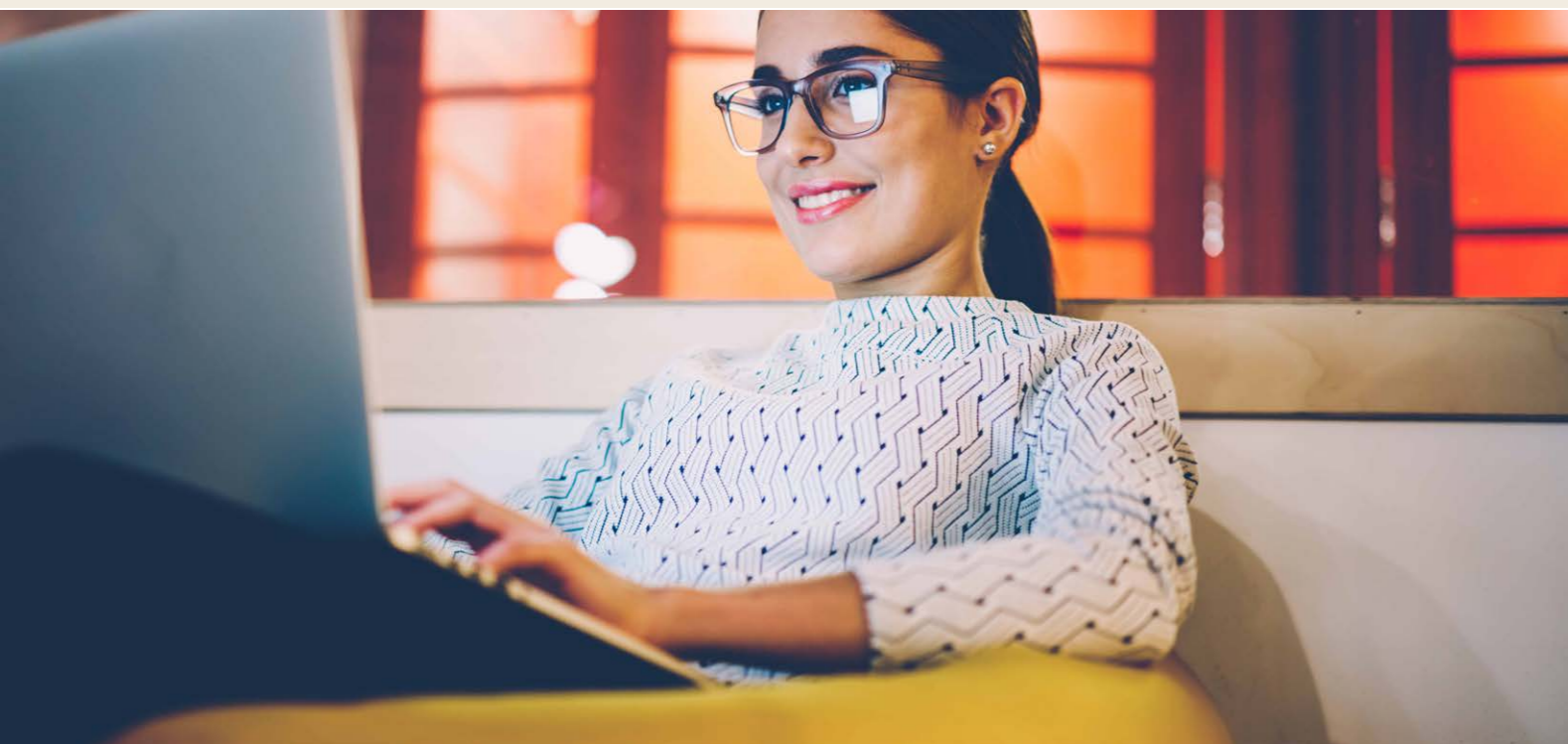
Do they have other services attached to their lines? i.e. alarms, PDQ machines, CCTV

Do they have services with another provider (i.e. Broadband with you, Line Rental with another provider)?

Do they wish to retain their current number/s?

We've provided a useful Customer Information Gathering Form you can use and keep with your customer account details, feel free to adapt this and use for your customers. It will help you understand your customers migration journey.

[Download Customer Information Gathering Form](#)



Best Practice

The [Openreach Trial Best Practice Guide](#) is expected to extend to the 117 exchanges and Nationwide withdrawal program, this can be found at www.offta.org.uk within the Best Practice Page of their website. We recommend reading the guide and if you have any questions please email:

greatswitchoff@digitalwholesalesolutions.com for support

DWS Best Practice:

For Residential Customers:

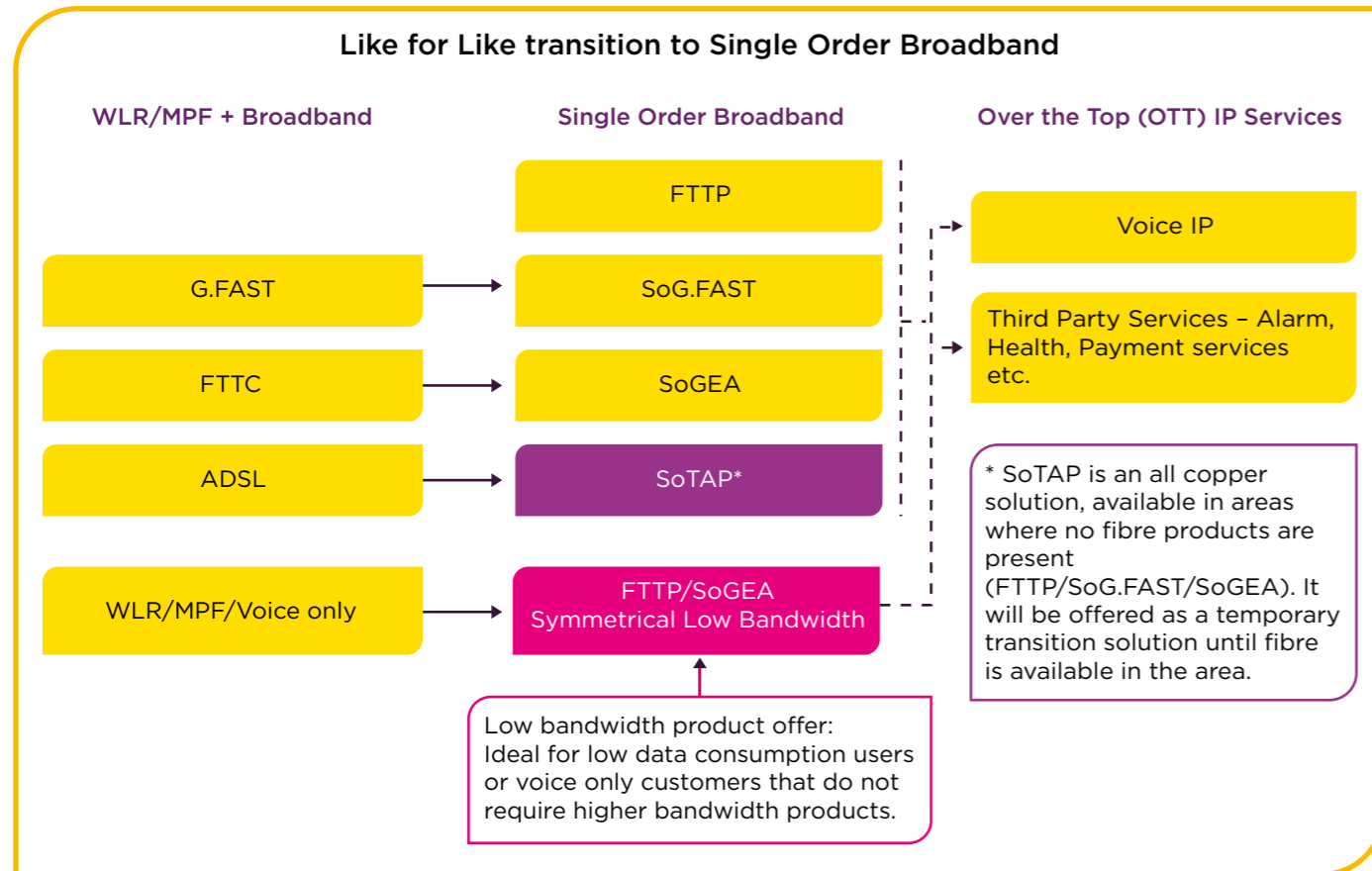
- > **DUTY OF CARE** - Proactively try to identify lines with special services by asking your customer: Do you have any health care or alarm devices that could be used by your telephone line? You will also need to ensure your **customer is aware such devices need to be VOIP compatible** and that they have a **local power supply available** to power such devices. You should also be identifying whether your customer wants to **retain their current phone number**
- > **TIME CONSCIOUS** - If your customer does have additional services on the line, **allow them time to contact their appropriate equipment provider** (Local authorities for health pendants or alarm/monitoring provider). It is recommended a minimum of 10 working days
- > **UNDERSTAND THE JOURNEY** - The correct order journey can improve the experience of the migration. For residential customers it is important to **ask about extensions to their property** and **choose the right type of installation** alongside identifying the requirement to retain their number
- > **POINT OF SALE** - Provide as much information as possible at the point of sale, this should include you providing a clear understanding to your customer **what is happening, risks, if anything will change on the premises** and you should provide a **dedicated point of contact** to help if something goes wrong
- > **BE FLEXIBLE** - It is better to **postpone a migration** than let vulnerable customers lose special services they rely on. In cases where there is a threat to life, a **roll back process** will be available

For Business Customers:

- > **DUTY OF CARE** - Business best practice principles will need to follow those of residential, but you should be mindful that there might be different types of special services you need to create a special **point of sale script**, for example: You will need to ask if the customer using card payment terminals that could be business critical. You should also be identifying whether your customer wants to **retain their current phone number**
- > **TIME CONSCIOUS** - Businesses can have **complex migration activities and porting requirements**; you need to allow time for them to co-ordinate these activities
- > **CLEAR COMMUNICATIONS** - This is also important for residential lines but where possible all parties impacted by the migration should act with integrity, providing clear communication to ensure a seamless transition. **All parties, voice, broadband and special service provider should work together**
- > **UNDERSTAND THE JOURNEY** - The correct order journey can improve the experience of the migration. For business customers it is important to know **what type of equipment they have including any plans for IP Voice**, if you are not their VOIP supplier. This will enable you to provide the correct type if installation type

Guide to the new technology

The below diagram shows the like-for-like technology transitions from WLR/MPF + broadband to the new Single Order broadband.



Improve customer experience with new installations:

New installation options, also known as site visit reasons, are available to Single Order products to improve the experience:

Engineer Activity	No Site Visit	Standard	Standard + Prove IP Voice	Premium	Premium + Prove IP Voice
Enables the network to provide service without visiting EU site	✓				
Enables the network and attends EU site to install/setup the service		✓	✓	✓	✓
Carries out installation of Wi-Fi enhancements and tests/optimises the service, along with a demo to the EU				✓	✓
Tests the IP voice service			✓		✓

EU = End User

An additional module that Openreach plan to introduce will be the 'Install UPS'. This will allow the Openreach engineer to install your third-party battery backup solution. To note, Openreach will not source or provide the battery backup unit.

IMPORTANT - OTT IP Services

OTT IP services are standalone products. They are not included with a single order broadband and require a separate order. For Voice only single lines or low data consumption services (e.g. payment card services), a single order low bandwidth product will be available. The Communication Provider should then offer an over the top Voice service and should be aware of any other required services on the line, though these might be supported by a third party.

Single Order Broadband - Compatible Routers

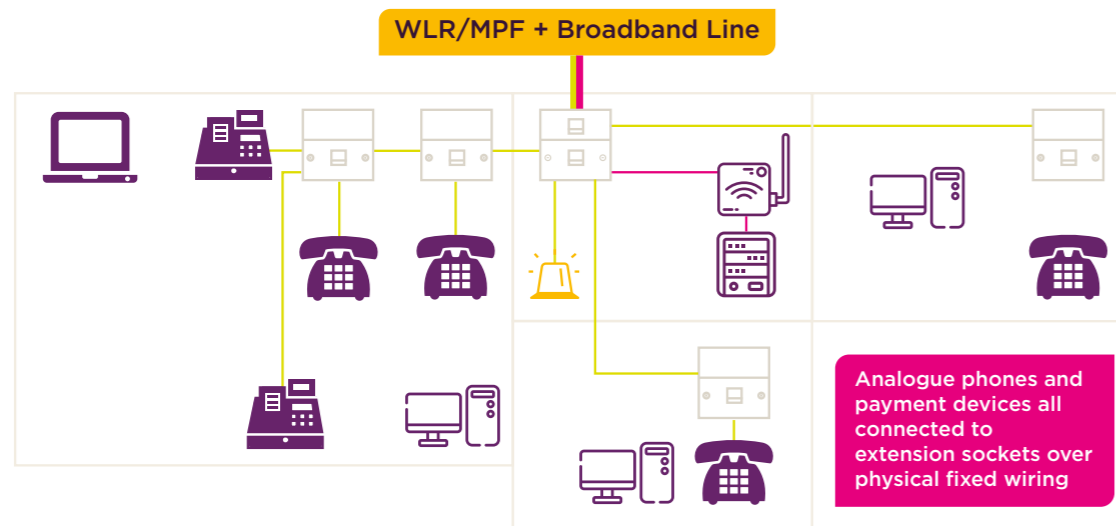
DWS currently offer routers which are compatible with the Single Order broadband products. See list below:

Single Order Product	Technicolor Routers		
	TG588v2	DGA 0122	DGA 4231
FTTP	No	Yes - TBS	Yes - TBS
SOGFAST	No	No	Yes - TBS
SOGEA	Yes	Yes	Yes
SOTAP	Yes	Yes	Yes
ATA port	No	x2 ports	x2 ports

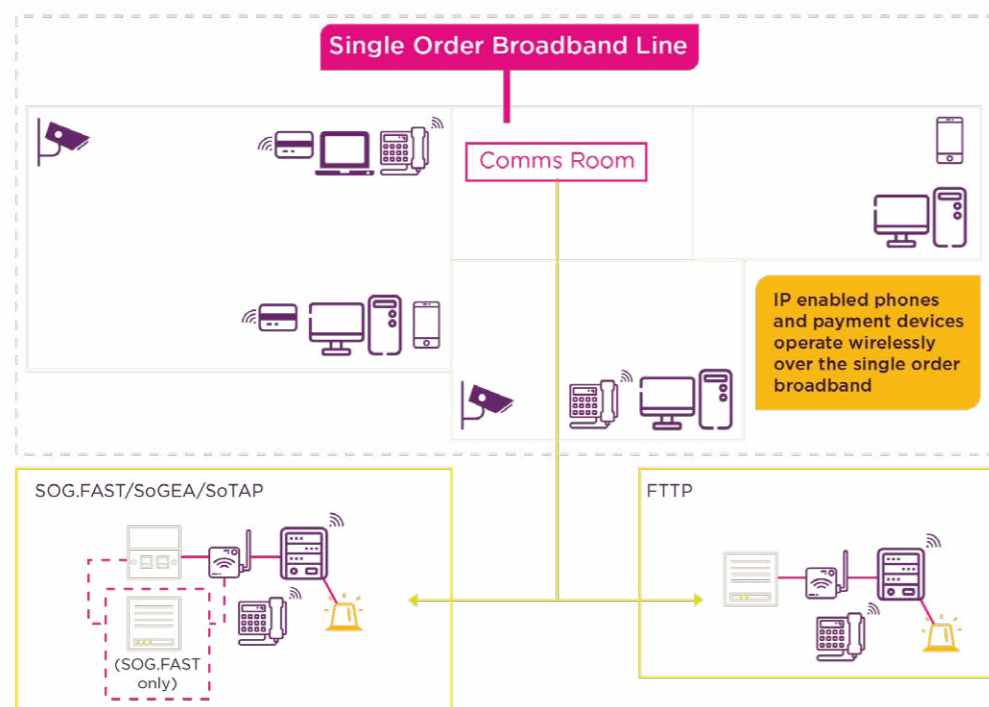
TBS: Two Box Solution, whereby the Technicolor router will connect to the Openreach provided ONT, via the Ethernet WAN port.



Alongside your customers' product set changing, the way customers operate their day to day business functions is also likely to change. Below is an example of a small business customer with analogue office telephones, payment devices and alarm services, all connected via physical wiring and socket extensions.



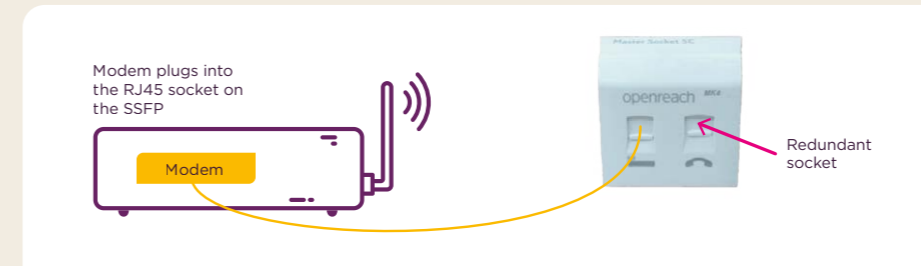
Following the customer migration, all devices will need to be compatible with IP. Onsite premise equipment may need to be changed.



Legend for equipment and services:

- Telephone extension socket
- Master socket (NTE5c)
- Analogue telephone
- IP wireless phone
- Openreach modem (FTTP & SoGFAST)
- Laptop
- Mobile
- Switches, firewalls and other devices
- Alarm system
- IP CCTV
- IP payment device
- Till system
- PC
- Modem/router (wireless)

Below are examples modem/router setups at the main (master) socket for SoGEGA services.

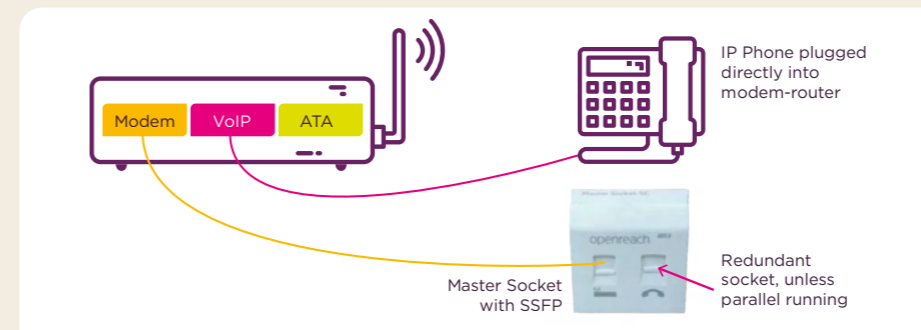


SoGEGA without IP or ATA voice:

> SOGEGA with SSFP



> SOGEGA with micro filter (no extensions)

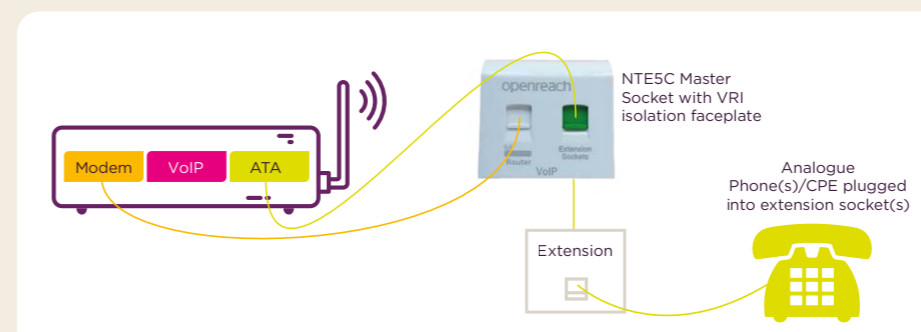


SoGEGA with IP/ATA voice 'over the top' VoIP:

> SOGEGA plus IP Voice



> SOGEGA plus ATA derived voice



> SOGEGA plus ATA derived voice over extension wiring and isolated VRI

For more information about please refer to the [DWS SOGEGA Product Description](#) and the [DWS Broadband Handbook](#).

Q: If my customer is based in an exchange area where the FTTP Exchange Upgrade stop sell applies, but they still don't have FTTP available, will they be impacted by the stop sell?

A: Stop sell will only apply where the EU has access to an FTTP product. If they do not have access, they will be able to buy other products such as MPF, FTTC, SOGEA where available.

Q: If I migrate my customer to SOGEA and then FTTP becomes available at their premises, do I need to do a second migration onto FTTP?

A: As part of the FTTP exchange upgrade programme, any premises enabled for FTTP should have migrated to an FTTP solution, this also includes any premises that is connected to SOGEA.

Q: Are there going to be more exchanges confirmed going forwards as part of the FTTP Exchange Upgrade Programme?

A: Yes. Openreach have confirmed that this will most likely become a continual advancement as more and more FTTP is rolled out and are expected to release these details on a quarterly basis.

Q: Do the same stop sell principles apply for the Mildenhall Trial exchange?

A: Mildenhall will migrate all WLR & MPF lines to fibre alternatives inside the fibre footprint and WLR lines to SOTAP or alternative products outside of the fibre footprint. (MPF and SOTAP will be available in a fibre area if there is no spare fibre capacity).

Q: Are there any Openreach incentives/discounts in place for me to transition my customer base sooner and become an Early Innovator for these exchanges?

A: Currently incentives are focused on trial exchanges only, we are currently working with our suppliers to ensure these can be passed down.

Q: What products are affected?

A: The PSTN supports a number of Openreach products: WLR3 analogue, ISDN2, ISDN30, LLU SMPF, SLU SMPF, Narrowband Line Share and Classic products. These products are generically referred to, as part of the industry programme, as WLR products. When the analogue network closes in 2025 these products will no longer be available.

Q: If the customer wishes to keep a copper type services, can they just migrate to LLU?

A: In some circumstances where the customer is not in an exchange area that is impacted by the FTTP Exchange Upgrade stop sell, they can migrate to LLU MPF (only where there is no FTTP availability).

Q: My customer currently has a line rental and broadband service with me but now they only require broadband, what do I do?

A: You can migrate your customer over to a single order broadband product. The voice service will stop working and effectively becomes redundant in this instance. Voice service is an optional add-on to your broadband service.

Q: My customer has a voice only line, there is a significant price difference for them so what can I do?

A: We understand and appreciate that not all customers are the same in terms of their usage. For example, a business may only rely on processing transactions payments on a line and does not require IP Voice or broadband for business applications. In these circumstances, a low bandwidth package is available (0.5 mbps).

Q: Can my customer keep their current phone number?

A: Your customer can keep their phone number if you inform us of this at point of sale / migration order placed but you will need to take out an OTT IP Voice service (to run parallel with your Single Order Broadband product) and indicate that you wish to port the number onto the new IP Voice service otherwise you will lose the number once the service migrates away from the existing WLR or MPF Service.

Q: Is there any push back on any key dates previously referenced in the roadmap due to COVID-19?

A: The 2025 WLR Withdrawal date is not something that can be pushed back, this was defined as a necessity due to the BT group PSTN network infrastructure reaching its end of life. This also means it is crucial that the other key dates leading up to the 2025 withdrawal date also do not get pushed back. This will of course be continued to be monitored as per updates directly from Openreach and OFCOM.

Q: Can I migrate all my services in bulk?

A: We will work alongside you to ensure all of your services migrate / are upgraded to the new solution. At present there is no bulk order option in place, but all orders can be placed via our portals.

Q: What if the only product available to buy is one that as a partner I am not currently set up to provide?

A: Please speak to your Account Manager to discuss these products in more detail - we have all of the tools and services available to help you with your transition to an all IP solution

Q: What is an ATA Port?

A: ATA stands for Analogue Telephone Adaptor. They are used to allow EU's to utilise their old hardware equipment. We will be launching our new Technicolor broadband routers and all models will include an ATA port later in 2020.

Q: If I have an ATA will I still require an IP Voice Service?

A: Yes, your ATA will convert your analogue signals to digital IP Voice but in order to use this you must have an IP Voice product over the top of your new Single order Broadband to transmit the calls. Example: HV.Select Hosted Seat License.

Q: Will customers be able to use their own routers if they are compatible for FTTC?

A: Yes, if your customer is already on an FTTC Enabled router then it will be compatible as SOGEA is built upon the foundations of FTTC.

Router development is underway with our Technicolor router offerings expected later this year.

We are also awaiting updates from Openreach, OFCOM and market leaders in router technological specifications to confirm what will still be compatible and what hardware will become redundant.

Q: Is there a porting process that doesn't cut the circuit moving to VOIP?

A: SOGEA and FTTP orders will need to have a voice order placed alongside the migration order. These do not work like the current SIM2 orders so an OTT (over the top) voice order will need to be raised to run parallel with a significant amount of notice, (e.g. 15 days) in order for the number to port over to the IP Voice service.

Q: My customer is a CNI / vulnerable customer, are they excluded from the FTTP rollout and will they be supported throughout the migration?

A: All customer types are affected due to the nationwide removal of PSTN services. We will of course be supporting you and your customers to make the transition as seamless as possible

Q: What are the lead-times for migrating services over to SOGEA/FTTP?

A: A 15 working day lead time to ensure that any OTT orders that are required can be matched to run parallel to each other. – Openreach have suggested a minimum of 10 working days, please check the best practise guidelines and always consider porting timescales if you need to provide an OTT IP Voice service.

Q: When are the rate cards due for release in order for us to start selling SOGEA?

A: The rate cards are available now, speak to your account manager for more details.

Q: What if my customers business relies on devices such as alarm systems, lift lines, card payment machines etc - will these work on the new Single order products?

A: It is imperative that your customer contacts the vendor of these devices to confirm whether they are IP compatible or not. If the latter you will need to source new devices which are IP Compatible, to allow you to continue operating as a business. Otherwise these devices will cease to work when moving to a Single Order Product.

Q: After the stop sell period can we still undertake CP to CP migrations?

A: Migrations between CP's will still be available but the destination product they are migrating to will need to align with the stop sell rules. Meaning that if the EU is in the FTTP footprint then they can only migrate over to FTTP.

Q: What if there are two providers, one for the broadband and one for WLR?

A: Openreach will recognise the line provider as the existing communications provider, but the broadband providers can move the customer if required.

Q: If my customer wants any additional calling and network features and they sit within the affected exchanges can I still provide these?

A: Yes you will be able to provide these functions until the stop-sell dates, however we would encourage that you arrange to migrate over to FTTP solutions with an OTT voice solution so that your customer is prepared and ready for the PSTN Switch off.

Q: What are the Single Order Products and what do they do?

FTTP: Fastest and most resilient ALL Fibre Product speeds of upto 1 Gbps

SOGFAST: Delivering Ultrafast in a single order, speeds of upto 330 Mbps

SOGEA: Delivering Superfast in a single order, speeds of upto 80 Mbps

SOTAP: Supporting non-fibre areas, speeds of upto 17 Mbps

Q: What if I decide to not take part in the PSTN Switch Off / FTTP Exchange Upgrade and stay with my current product portfolio?

There is no option to opt out of the FTTP trail exchanges. If you have a working WLR or MPF asset in one of the exchanges you will be impacted by the stop sell principles and rules with the expectation that the existing bases will be migrated onto an all IP Solution / alternative product by the end of the trails in December 2022.

Q: Why do I need to act now?

The withdrawal of PSTN copper services has a deadline of Dec 2025 which means any services after this date will cease. It is imperative that you communicate out to your customer base in order for both you and them to be prepared. The change is happening, and you do not want to be left behind.



Exchange Name	Exchange Location	Exchange Code	Order restriction implementation date	Last amended date
Salisbury	Wiltshire	STSALIS	01-Dec-20	01-Dec-19
Swansea	Swansea	SWSX	05-Oct-21	10-May-21
Dagenham	Greater London	LNDAG	05-Oct-21	10-May-21
Be/City	Belfast	NICTY	05-Oct-21	10-May-21
Failsworth	Greater Manchester	MRFAI	05-Oct-21	10-May-21
Kilmarnock	East Ayrshire	WSKIL	05-Oct-21	10-May-21
Wallasey	Wirral	LVWAL	05-Oct-21	10-May-21
Belfast Balmoral	Belfast	NIBML	05-Oct-21	10-May-21
Merton Park	Greater London	LSMEPK	05-Oct-21	10-May-21
Morley	Leeds	MYMOR	05-Oct-21	10-May-21
Stoneycroft	Liverpool	LVSTO	05-Oct-21	10-May-21
Walkden	Greater Manchester	MRWAL	05-Oct-21	10-May-21
Whitchurch	Cardiff	SWWXC	05-Oct-21	10-May-21
Gosforth	Newcastle upon Tyne	NEGF	05-Oct-21	10-May-21
Headingley	Leeds	MYHEA	05-Oct-21	10-May-21
Harehills	Leeds	MYHHL	05-Oct-21	10-May-21
Eccles	Greater Manchester	MRECC	05-Oct-21	10-May-21
Solihull	Solihull	CMSOL	05-Oct-21	10-May-21
Cloughton	Wirral	LVCLA	05-Oct-21	10-May-21
Swinton	Greater Manchester	MRSWI	05-Oct-21	10-May-21
Tile Hill	Coventry	CMTIL	05-Oct-21	10-May-21
South	Bristol, City of	SSSOU	05-Oct-21	10-May-21
Stechford	Birmingham	CMSTE	29-Jun-21	10-May-21
Prestwich	Greater Manchester	MRPRE	05-Oct-21	10-May-21
Gedling	Gedling	EMGDDLI	05-Oct-21	10-May-21
Rock Ferry	Wirral	LVROC	05-Oct-21	10-May-21
Whiteabbey	Antrim and Newtownabbey	NIWBY	05-Oct-21	10-May-21
Whitefield	Greater Manchester	MRWHI	05-Oct-21	10-May-21
Sherwood	Nottingham	EMSHRWO	05-Oct-21	10-May-21
Belfast Cregagh	Belfast	NICRG	29-Jun-21	10-May-21
Burgh Heath	Reigate and Banstead	LSBURH	05-Oct-21	10-May-21
Gants Hill	Greater London	LNGHL	05-Oct-21	10-May-21
Sheldon	Birmingham	CMSHEL	29-Jun-21	10-May-21
Belfast East	Belfast	NIEAS	05-Oct-21	10-May-21

Exchange Name	Exchange Location	Exchange Code	Order restriction implementation date	Last amended date
Cantley	Doncaster	SLCLY	05-Oct-21	10-May-21
Earlson	Coventry	CMEARD	05-Oct-21	10-May-21
Bearwood	Birmingham	CMBEAR	05-Oct-21	10-May-21
Streetly	Birmingham	CMSTRE	29-Jun-21	10-May-21
Ewell	Epsom and Ewell	LSEWE	05-Oct-21	10-May-21
Cressington	Liverpool	LVCRE	05-Oct-21	10-May-21
Highbury	Birmingham	CMHIGH	29-Jun-21	10-May-21
Sefton Park	Liverpool	LVSEF	05-Oct-21	10-May-21
Hatch End	Three Rivers	LWHAT	05-Oct-21	10-May-21
Harborne	Birmingham	CMHARBO	05-Oct-21	10-May-21
Radcliffe	Greater Manchester	MRRAD	05-Oct-21	10-May-21
Trentside	Rushcliffe	EMTRENT	05-Oct-21	10-May-21
Abbeyhill	City of Edinburgh	ESABB	05-Oct-21	10-May-21
Great Crosby	Sefton	LVGRE	05-Oct-21	10-May-21
Boreham	Chelmsford	EABOR	05-Oct-21	10-May-21
Belfast Malone	Belfast	NIMAL	05-Oct-21	10-May-21
Belfast Knock	Belfast	NIKNK	29-Jun-21	10-May-21
Springfield	Birmingham	CMSPR	05-Oct-21	10-May-21
Horsforth	Leeds	MYHSF	05-Oct-21	10-May-21
Hulme Hall	Greater Manchester	MRHUL	05-Oct-21	10-May-21
Bishopsworth	Bristol, City of	SSBIS	05-Oct-21	10-May-21
Belfast North	Belfast	NINTH	05-Oct-21	10-May-21
Be/Ballysillan	Belfast	NIBYS	29-Jun-21	10-May-21
Dundonald	Belfast	NIDLD	05-Oct-21	10-May-21
Belfast Ormeau	Belfast	NIORM	05-Oct-21	10-May-21
Toothill	Swindon	SSTHL	05-Oct-21	10-May-21
Childwall	Liverpool	LVCHI	05-Oct-21	10-May-21
Belfast Fortwilliam	Belfast	NIFWM	29-Jun-21	10-May-21
Beacon	Birmingham	CMBEAC	29-Jun-21	10-May-21
Kenton Road	Greater London	LWKROA	29-Jun-21	10-May-21
Radford	Coventry	CMRAD	05-Oct-21	10-May-21
Gateacre	Liverpool	LVGAT	05-Oct-21	10-May-21
Corstorphine	City of Edinburgh	ESCOR	29-Jun-21	10-May-21
Birchfield	Birmingham	CMBIR	05-Oct-21	10-May-21

Exchange Name	Exchange Location	Exchange Code	Order restriction implementation date	Last amended date
Allestree Park	Derby	EMALLES	05-Oct-21	10-May-21
Pinhoe	Exeter	WWPINH	05-Oct-21	10-May-21
Keresley	Coventry	CMKER	05-Oct-21	10-May-21
Kentford	Forest Heath	EAKEN	05-Oct-21	10-May-21
Westbury-On-Trym	Bristol, City of	SSWOT	05-Oct-21	10-May-21
Carryduff	Northern Ireland	NICF	05-Oct-21	10-May-21
Caergwrle	Flintshire	WNCAG	29-Jun-21	10-May-21
Mayals	Swansea	SWMYS	05-Oct-21	10-May-21
Cranfield	Central Bedfordshire	SMCR	05-Oct-21	10-May-21
Tarporley	Cheshire West and Chester	WNTAR	05-Oct-21	10-May-21
Belfast Stormont	Belfast	NISTM	05-Oct-21	10-May-21
Flockton	Kirklees	MYFLO	05-Oct-21	10-May-21
Parbold	West Lancashire	LCPAR	05-Oct-21	10-May-21
Mickle Trafford	Cheshire West and Chester	WNMT	05-Oct-21	10-May-21
Padstow	Cornwall	WWPADS	05-Oct-21	10-May-21
Sully	Vale of Glamorgan	SWXUU	05-Oct-21	10-May-21
Daviot	Highland	NSDAV	05-Oct-21	10-May-21
Rumford	Cornwall	WWRUMF	05-Oct-21	10-May-21
Deddington	Cherwell	SMDD	29-Jun-21	10-May-21
Catforth	Preston	LCCAT	05-Oct-21	10-May-21
Canon Pyon	Herefordshire	WNCP	05-Oct-21	10-May-21
St Buryan	Cornwall	WWSBUR	05-Oct-21	10-May-21
Lanreath	Cornwall	WWLANR	05-Oct-21	10-May-21
Coads Green	Cornwall	WWCOAD	05-Oct-21	10-May-21
Otterham Station	Cornwall	WWOSTN	05-Oct-21	10-May-21
Burleygate	Herefordshire, County of	WNBGT	05-Oct-21	10-May-21
Crosthwaite	South Lakeland	LCCHE	05-Oct-21	10-May-21
Chineham	Basingstoke and Deane	THCHN	05-Oct-21	10-May-21
Bonvilston	Vale of Glamorgan	SWBJY	05-Oct-21	10-May-21
Tresillian	Cornwall	WWTRES	05-Oct-21	10-May-21
Canworthy Water	Cornwall	WWCANW	05-Oct-21	10-May-21
Llandegla	Denbighshire	WNLDA	05-Oct-21	10-May-21
Wettenhall	Cheshire East	WMWET	05-Oct-21	10-May-21

Exchange Name	Exchange Location	Exchange Code	Order restriction implementation date	Last amended date
Tudweiliog	Gwynedd	WNTUD	05-Oct-21	10-May-21
Harewood End	Herefordshire	WNHAE	05-Oct-21	10-May-21
Crookham	Northumberland	ESCRO	05-Oct-21	10-May-21
Arley	Cheshire West and Chester	MRARL	05-Oct-21	10-May-21
Belsay	Northumberland	NEBLS	05-Oct-21	10-May-21
Southwick	Dumfries and Galloway	WSSOK	05-Oct-21	10-May-21
Bridgemere	Cheshire East	WMBGM	05-Oct-21	10-May-21
Boreland	Dumfries and Galloway	WSBOR	05-Oct-21	10-May-21
Bontddu	Gwynedd	WNBON	05-Oct-21	10-May-21
Great Bernera	Eilean Siar	NSGRE	05-Oct-21	10-May-21
Ringford	Dumfries and Galloway	WSRIN	05-Oct-21	10-May-21
Sutton	Chichester	SDSTTN	05-Oct-21	10-May-21
East Marden	Chichester	SDSTMRD	05-Oct-21	10-May-21
Lempitlaw	Scottish Borders	ESLEM	05-Oct-21	10-May-21
Achnasheen	Highland	NSASN	05-Oct-21	10-May-21
Aultguish	Highland	NSALG	05-Oct-21	10-May-21
Altnaharra	Highland	NSALT	05-Oct-21	10-May-21
Armagh	Armagh	NIAM	05-Oct-21	05-Oct-20
Bangor	Newtownards & Bangor	NIBA	05-Oct-21	05-Oct-20
Barry	Vale of Glamorgan	SWCFK	05-Oct-21	05-Oct-20
Benton	North Tyneside	NEB	05-Oct-21	05-Oct-20
Bow	Mid Devon	WWBOW	05-Oct-21	05-Oct-20
Brentwood	Brentwood	EABRW	05-Oct-21	05-Oct-20
Broadstairs	Thanet	NDBRO	05-Oct-21	05-Oct-20
Bromsgrove	Bromsgrove	WMBPZ	05-Oct-21	05-Oct-20
Broxburn	West Lothian	ESBRO	05-Oct-21	05-Oct-20
Capheaton	Northumberland	NECAP	05-Oct-21	05-Oct-20
Cardinham	Cornwall	WWCARD	05-Oct-21	05-Oct-20
Caxton	South Cambridgeshire	EACAX	05-Oct-21	05-Oct-20
Cheylesmore	Coventry	CMCHEY	05-Oct-21	05-Oct-20
Doncaster	Doncaster	SLDC	05-Oct-21	05-Oct-20
Doncaster North	Doncaster	SLDCN	05-Oct-21	05-Oct-20
Dutton Diffeth	Wrexham	WNDD	05-Oct-21	05-Oct-20
Eastham	Wirral	LVEAS	05-Oct-21	05-Oct-20

Exchange Name	Exchange Location	Exchange Code	Order restriction implementation date	Last amended date
Edwalton	Rushcliffe	EMEDWAL	05-Oct-21	05-Oct-20
Glendale	Highland	NSGDL	05-Oct-21	05-Oct-20
Halkyn	Flintshire	WNHAL	05-Oct-21	05-Oct-20
Hartburn	Northumberland	NEHR	05-Oct-21	05-Oct-20
Haydon Wick	Swindon	SSHYW	05-Oct-21	05-Oct-20
Hepple	Northumberland	NEHPL	05-Oct-21	05-Oct-20
Heriot	Scottish Borders	ESHER	05-Oct-21	05-Oct-20
How Caple	Herefordshire	WNHCP	05-Oct-21	05-Oct-20
Ilford North	Greater London	LNILN	05-Oct-21	05-Oct-20
Lillingstonedayrell	Aylesbury Vale	SMLD	05-Oct-21	05-Oct-20
Linstead	Suffolk Coastal	EALIN	05-Oct-21	05-Oct-20
Llanfaethlu	Isle of Anglesey	WNLFU	05-Oct-21	05-Oct-20
Longridge	Ribble Valley	LCLON	05-Oct-21	05-Oct-20
Lurgan	Craigavon	NILG	05-Oct-21	05-Oct-20
Mountwood	Wirral	LVMOU	05-Oct-21	05-Oct-20
Newtonards	Newtownards & Bangor	NINTS	05-Oct-21	05-Oct-20
Orpington	Greater London	LSORP	05-Oct-21	05-Oct-20
Penzance	Cornwall	WWPENZ	05-Oct-21	05-Oct-20
Portadown	Craigavon	NIPO	05-Oct-21	05-Oct-20
Rickmansworth	Three Rivers	LWRIC	05-Oct-21	05-Oct-20
Saxmundham	Suffolk Coastal	EASXM	05-Oct-21	05-Oct-20
Stanecastle	North Ayrshire	WSIRS	05-Oct-21	05-Oct-20
Tadcaster	Selby	MYTAD	05-Oct-21	05-Oct-20
Thames Ditton	Elmbridge	LSTHDT	05-Oct-21	05-Oct-20
Thamesmead	Greater London	LSTHMD	05-Oct-21	05-Oct-20
Thornton Heath	Greater London	LSTHO	05-Oct-21	05-Oct-20
Waterloo	Sefton	LVWAT	05-Oct-21	05-Oct-20
Waternish	Highland	NSWNS	05-Oct-21	05-Oct-20
Wickford	Basildon	EAWFD	05-Oct-21	05-Oct-20
Winterton	North Lincolnshire	SLWKT	05-Oct-21	05-Oct-20
Wollaton	Nottingham	EMWOLLA	05-Oct-21	05-Oct-20
Woodgate	Birmingham	CMWDGT	05-Oct-21	05-Oct-20
Wythenshawe	Greater Manchester	MRWYT	05-Oct-21	05-Oct-20
Zelah	Cornwall	WWZELA	05-Oct-21	05-Oct-20

Exchange Name	Exchange Location	Exchange Code	Order restriction implementation date	Last amended date
Binley	Coventry	CMBIN	25-Jan-22	25-Jan-21
Shirley	Solihull	CMSHI	25-Jan-22	25-Jan-21
Billericay	Basildon	EABCY	25-Jan-22	25-Jan-21
Hardingstone	Northampton	EMHARDI	25-Jan-22	25-Jan-21
Pear tree	Derby	EMPRTRE	25-Jan-22	25-Jan-21
Whitburn	West Lothian	ESWHI	25-Jan-22	25-Jan-21
Formby	Sefton	LCFOM	25-Jan-22	25-Jan-21
Epsom	Epsom and Ewell	LSEPSM	25-Jan-22	25-Jan-21
Molesey	Greater London	LSMOL	25-Jan-22	25-Jan-21
Aughton Green	West Lancashire	LVAUG	25-Jan-22	25-Jan-21
Birkenhead	Wirral	LVBIR	25-Jan-22	25-Jan-21
Chorleywood	Three Rivers	LWCHO	25-Jan-22	25-Jan-21
Chapelton	Leeds	MYCHA	25-Jan-22	25-Jan-21
Crossgates	Leeds	MYCSG	25-Jan-22	25-Jan-21
Moortown	Leeds	MYMOO	25-Jan-22	25-Jan-21
Whitley Bay	North Tyneside	NEWB	25-Jan-22	25-Jan-21
Balby	Doncaster	SLBAL	25-Jan-22	25-Jan-21
Woodhouse	Sheffield	SLWD	25-Jan-22	25-Jan-21
North	Bristol, City of	SSNOR	25-Jan-22	25-Jan-21
Brock	Wyre	LCBRC	25-Jan-22	25-Jan-21
Chwilog	Gwynedd	WNCHW	25-Jan-22	25-Jan-21
Bungay	Waveney	EABGY	25-Jan-22	25-Jan-21
Sheering	Epping Forest	EASHR	25-Jan-22	25-Jan-21
Southminster	Maldon	EASMN	25-Jan-22	25-Jan-21
Anstruther	Fife	ESANS	25-Jan-22	25-Jan-21
Lundin Links	Fife	ESLUN	25-Jan-22	25-Jan-21
West Calder	West Lothian	ESWCA	25-Jan-22	25-Jan-21
Burscough	West Lancashire	LCBUS	25-Jan-22	25-Jan-21
Clitheroe	Ribble Valley	LCCLR	25-Jan-22	25-Jan-21
Croston	Chorley	LCCRS	25-Jan-22	25-Jan-21
Fleetwood	Wyre	LCFLW	25-Jan-22	25-Jan-21
Rufford	West Lancashire	LCRUF	25-Jan-22	25-Jan-21
Betchworth	Mole Valley	LSBET	25-Jan-22	25-Jan-21
Neston	Cheshire West and Chester	LVNES	25-Jan-22	25-Jan-21

Exchange Name	Exchange Location	Exchange Code	Order restriction implementation date	Last amended date
Congleton	Cheshire East	MRCO	25-Jan-22	25-Jan-21
Kirkburton	Kirklees	MYKKB	25-Jan-22	25-Jan-21
West Kingsdown	Sevenoaks	NDWKI	25-Jan-22	25-Jan-21
Crook	County Durham	NECR	25-Jan-22	25-Jan-21
Olney	Milton Keynes	SMOY	25-Jan-22	25-Jan-21
Tarvin	Cheshire West and Chester	WNTV	25-Jan-22	25-Jan-21
Okehampton	West Devon	WVOKEH	25-Jan-22	25-Jan-21
Campsie	Derry-Londonderry	NICSI	25-Jan-22	25-Jan-21
Carrickfergus	Carrickfergus	NIC	25-Jan-22	25-Jan-21
Castledawson	Castledawson	NICD	25-Jan-22	25-Jan-21
Comber	Newtownards & Bangor	NICR	25-Jan-22	25-Jan-21
Cross	Derry-Londonderry	NICRS	25-Jan-22	25-Jan-21
Dundrum	Dundrum	NIDR	25-Jan-22	25-Jan-21
Portavogie	Portavogie	NIPVE	25-Jan-22	25-Jan-21
Portstewart	Portstewart	NIPS	25-Jan-22	25-Jan-21
Warrenpoint	Warrenpoint, The Burren	NIWP	25-Jan-22	25-Jan-21
Whitehead	Whitehead, Ballycarry	NIWD	25-Jan-22	25-Jan-21
Henley- In- Arden	Stratford-on-Avon	CMHEN	29-Apr-22	29-Apr-21
Hillside	Bromsgrove	CMHILL	29-Apr-22	29-Apr-21
Lapworth	Warwick	CMLAP	29-Apr-22	29-Apr-21
Ely	East Cambridgeshire	EAELY	29-Apr-22	29-Apr-21
Latchingdon	Maldon	EALAT	29-Apr-22	29-Apr-21
Long Eaton	Erewash	EMLONGE	29-Apr-22	29-Apr-21
Melbourne	South Derbyshire	EMMELBO	29-Apr-22	29-Apr-21
Bathgate	West Lothian	ESBAT	29-Apr-22	29-Apr-21
Kelso	Scottish Borders	ESKEL	29-Apr-22	29-Apr-21
Peebles	Scottish Borders	ESPEB	29-Apr-22	29-Apr-21
Ecclestone	Chorley	LCECC	29-Apr-22	29-Apr-21
Garstang	Wyre	LCGAR	29-Apr-22	29-Apr-21
Nazeing	Epping Forest	LNNAZ	29-Apr-22	29-Apr-21
Chislehurst	Greater London	LSCHI	29-Apr-22	29-Apr-21
Norbury	Greater London	LSNOR	29-Apr-22	29-Apr-21
Bromborough	Wirral	LVBRO	29-Apr-22	29-Apr-21
Culcheth Padgate	Warrington	LVCUL	29-Apr-22	29-Apr-21

Exchange Name	Exchange Location	Exchange Code	Order restriction implementation date	Last amended date
Ellesmere Port	Cheshire West and Chester	LVELL	29-Apr-22	29-Apr-21
Netherley	Liverpool	LVNET	29-Apr-22	29-Apr-21
Hayes	Greater London	LWHAY	29-Apr-22	29-Apr-21
Bramhall	Greater Manchester	MRBRA	29-Apr-22	29-Apr-21
Winsford	Cheshire West and Chester	MRWIN	29-Apr-22	29-Apr-21
Woodley	Greater Manchester	MRWOO	29-Apr-22	29-Apr-21
Hornsea	East Riding of Yorkshire	MYHNS	29-Apr-22	29-Apr-21
Pudsey	Leeds	MYPUD	29-Apr-22	29-Apr-21
Wetherby	Leeds	MYWEH	29-Apr-22	29-Apr-21
Frittenden	Tunbridge Wells	NDFRI	29-Apr-22	29-Apr-21
Forest Row	Wealden	NDFRO	29-Apr-22	29-Apr-21
Willington	County Durham	NEWT	29-Apr-22	29-Apr-21
Antrim	Antrim and Newtownabbey	NIAT	29-Apr-22	29-Apr-21
Banbridge	Armagh City, Banbridge and Craigavon	NIBB	29-Apr-22	29-Apr-21
Ballyclare	Antrim and Newtownabbey	NIBC	29-Apr-22	29-Apr-21
Ballymena	Mid and East Antrim	NIBM	29-Apr-22	29-Apr-21
Ballymoney	Causeway Coast and Glens	NIBO	29-Apr-22	29-Apr-21
Brookhall	Derry City and Strabane	NIBRH	29-Apr-22	29-Apr-21
Ballywalter	Ards and North Down	NIBWR	29-Apr-22	29-Apr-21
Cookstown	Mid Ulster	NICK	29-Apr-22	29-Apr-21
Carnlough	Mid and East Antrim	NICL	29-Apr-22	29-Apr-21
Coleraine	Causeway Coast and Glens	NICN	29-Apr-22	29-Apr-21
Donaghadee	Ards and North Down	NIDD	29-Apr-22	29-Apr-21
Dungannon	Mid Ulster	NIDG	29-Apr-22	29-Apr-21
Downpatrick	Newry, Mourne and Down	NIDP	29-Apr-22	29-Apr-21
Enniskillen	Fermanagh and Omagh	NIEK	29-Apr-22	29-Apr-21
Glengormley	Antrim and Newtownabbey	NIGGY	29-Apr-22	29-Apr-21
Hillsborough	Lisburn and Castlereagh	NIHO	29-Apr-22	29-Apr-21
Holywood	Ards and North Down	NIHW	29-Apr-22	29-Apr-21
Londonderry	Derry City and Strabane	NILD	29-Apr-22	29-Apr-21
Waterside	Derry City and Strabane	NILDW	29-Apr-22	29-Apr-21
Larne	Mid and East Antrim	NILE	29-Apr-22	29-Apr-21
Lisburn	Lisburn and Castlereagh	NILN	29-Apr-22	29-Apr-21

Exchange Name	Exchange Location	Exchange Code	Order restriction implementation date	Last amended date
Magherafelt	Mid Ulster	NIMF	29-Apr-22	29-Apr-21
Newcastle	Newry, Mourne and Down	NINE	29-Apr-22	29-Apr-21
Newry	Newry, Mourne and Down	NINY	29-Apr-22	29-Apr-21
Omagh	Fermanagh and Omagh	NIOM	29-Apr-22	29-Apr-21
Portrush	Causeway Coast and Glens	NIPR	29-Apr-22	29-Apr-21
Strabane	Derry City and Strabane	NISE	29-Apr-22	29-Apr-21
Findhorn	Moray	NSFIN	29-Apr-22	29-Apr-21
Findon	Worthing	SDFNDN	29-Apr-22	29-Apr-21
Southwick	Adur	SDSTHWC	29-Apr-22	29-Apr-21
Wadsley Bridge	Sheffield	SLWB	29-Apr-22	29-Apr-21
Bedminster	Bristol, City of	SSBED	29-Apr-22	29-Apr-21
Eastville	Bristol, City of	SSEAV	29-Apr-22	29-Apr-21
Long Ashton	North Somerset	SSLON	29-Apr-22	29-Apr-21
Wrington	North Somerset	SSWRI	29-Apr-22	29-Apr-21
Burry Port	Carmarthenshire	SWBUD	29-Apr-22	29-Apr-21
Mumbles	Swansea	SWMMV	29-Apr-22	29-Apr-21
Stone	Stafford	WMSTO	29-Apr-22	29-Apr-21
Buckley	Flintshire	WNBUC	29-Apr-22	29-Apr-21
Chester South	Cheshire West and Chester	WNCSS	29-Apr-22	29-Apr-21
Connahs Quay	Flintshire	WNDEE	29-Apr-22	29-Apr-21
Alloway	South Ayrshire	WSALL	29-Apr-22	29-Apr-21
Maybole	South Ayrshire	WSMAY	29-Apr-22	29-Apr-21
Prestwick	South Ayrshire	WSPRE	29-Apr-22	29-Apr-21
Camelford	Cornwall	WWCAME	29-Apr-22	29-Apr-21
Chelston	Torbay	WWCHEL	29-Apr-22	29-Apr-21
Liskeard	Cornwall	WWLISK	29-Apr-22	29-Apr-21
Lynton	North Devon	WWLYNT	29-Apr-22	29-Apr-21
Aberdare	Aberdare	SWAA	02-Aug-21	02-Aug-22
Alva	Alva	ESALV	02-Aug-21	02-Aug-22
Alvaston	CE Fibre Cities - DERBY	EMALVAS	02-Aug-21	02-Aug-22
Ardglass	Ardglass	NIAR	02-Aug-21	02-Aug-22
Ballyronan	Ballyronan	NIBRN	02-Aug-21	02-Aug-22
Barnoldswick	Barnoldswick	LCBAN	02-Aug-21	02-Aug-22

Exchange Name	Exchange Location	Exchange Code	Order restriction implementation date	Last amended date
BEAMISH	Beamish	NEBEA	02-Aug-21	02-Aug-22
BELLAGHY	Bellaghy	NIBY	02-Aug-21	02-Aug-22
BEXLEYHEATH	CE Fibre Cities - London	LSBEX	02-Aug-21	02-Aug-22
BIDFORD ON AVON	Bidford On Avon	CMBIDF	02-Aug-21	02-Aug-22
BOROUGH GREEN	Borough Green	NDBGR	02-Aug-21	02-Aug-22
BRIGHTON PORTSLADE	CE Fibre Cities - BRIGHTON AND HOVE	SDPRTSL	02-Aug-21	02-Aug-22
BRINSCALL	Brinscall	LCBRI	02-Aug-21	02-Aug-22
BRIXHAM	Brixham	WWBRIX	02-Aug-21	02-Aug-22
CAISTER	Caister	EACAI	02-Aug-21	02-Aug-22
CARDIFF	CE Fibre Cities - Cardiff	SWCFATE	02-Aug-21	02-Aug-22
CARMARTHEN	Carmarthen	SWCT	02-Aug-21	02-Aug-22
CASTLEFORD	CE Fibre Cities - LEEDS	MYCAS	02-Aug-21	02-Aug-22
CASTLEROCK	Castlerock	NICLK	02-Aug-21	02-Aug-22
CHEDDAR	Cheddar	SSCDR	02-Aug-21	02-Aug-22
COALISLAND	Coalisland	NICI	02-Aug-21	02-Aug-22
CODICOTE	Codicote	SMCI	02-Aug-21	02-Aug-22
COGENHOE	CE Fibre Cities - NORTHAMPTON	EMCOGEN	02-Aug-21	02-Aug-22
COLESHILL	Coleshill	CMCOLE	02-Aug-21	02-Aug-22
Cumnock	Cumnock	WSCMN	02-Aug-21	02-Aug-22
CUSHENDALL	Cushendall	NICUS	02-Aug-21	02-Aug-22
Denbigh	Denbigh	WNDEN	02-Aug-21	02-Aug-22
Dereham	Dereham	EADER	02-Aug-21	02-Aug-22
DOWNHAM MARKET	Downham Market	EADNM	02-Aug-21	02-Aug-22
DRIGHLINGTON	CE Fibre Cities - Leeds	MYDLT	02-Aug-21	02-Aug-22
DROMORE (CO DOWN)	Dromore	NIDO	02-Aug-21	02-Aug-22
DUNGIVEN	Dungiven	NIDV	02-Aug-21	02-Aug-22
EARLS BARTON	CE Fibre Cities - NORTHAMPTON	EMEARLS	02-Aug-21	02-Aug-22
EDINBURGH KIRKLIST	CE Fibre Cities - EDINBURGH	ESKRL	02-Aug-21	02-Aug-22

Exchange Name	Exchange Location	Exchange Code	Order restriction implementation date	Last amended date
EGLINTON	NI Fibre Cities - Derry-Londonderry	NIEG	02-Aug-21	02-Aug-22
Elmsted	Ashford	NDELM	02-Aug-21	02-Aug-22
Flint	Flint	WNFL	02-Aug-21	02-Aug-22
Forkhill	Forkhill	NIFH	02-Aug-21	02-Aug-22
Frodsham	Frodsham	LVFRO	02-Aug-21	02-Aug-22
Gilford	Gilford	NIGF	02-Aug-21	02-Aug-22
Gillingham	Gillingham	STGILGM	02-Aug-21	02-Aug-22
Glenborrodale	Glenborrodale	NSGBD	02-Aug-21	02-Aug-22
Glenmazeran	Glenmazeran	NSGMZ	02-Aug-21	02-Aug-22
GREAT ECCLESTON	Great Eccleston	LCGRC	02-Aug-21	02-Aug-22
GREYABBEY	Greyabbey	NIGY	02-Aug-21	02-Aug-22
Halfway	CE Fibre Cities - Glasgow	WSHAL	02-Aug-21	02-Aug-22
HELENS BAY	NI Fibre Cities - Newtownards & Bangor	NIHB	02-Aug-21	02-Aug-22
HELSEBY	CE Fibre Cities - WIRRAL	LVHEL	02-Aug-21	02-Aug-22
HOLYWELL	Holywell	WNHW	02-Aug-21	02-Aug-22
HOOTON	CE Fibre Cities - WIRRAL	LVHOO	02-Aug-21	02-Aug-22
Hullbridge	Hullbridge	EAHUL	02-Aug-21	02-Aug-22
JAMES BRIDGE	CE Fibre Cities - BIRMINGHAM	CMJAM	02-Aug-21	02-Aug-22
Kelty	Kelty	ESKLY	02-Aug-21	02-Aug-22
KEYNSHAM	CE Fibre Cities - BRISTOL	SSKEY	02-Aug-21	02-Aug-22
Kilkeel	Kilkeel	NIKI	02-Aug-21	02-Aug-22
Killyleagh	Killyleagh	NIKYL	02-Aug-21	02-Aug-22
Kincardine	Kincardine	ESKCA	02-Aug-21	02-Aug-22
Lennoxton	Lennoxton	WSLEX	02-Aug-21	02-Aug-22
LIMAVADY	NI Fibre Cities - Limavady	NILY	02-Aug-21	02-Aug-22
Ludlow	Ludlow	WNLUD	02-Aug-21	02-Aug-22
Lymm	Lymm	LVLYM	02-Aug-21	02-Aug-22
Lytham	Lytham	LCLYT	02-Aug-21	02-Aug-22
Machrie	East Ayrshire	WSMAC	02-Aug-21	02-Aug-22
MAGHULL	CE Fibre Cities - West Lancashire	LVMAG	02-Aug-21	02-Aug-22
MELTHAM	CE Fibre Cities - BRADFORD	MYMTH	02-Aug-21	02-Aug-22
Middlewich	Middlewich	MRMDW	02-Aug-21	02-Aug-22

Exchange Name	Exchange Location	Exchange Code	Order restriction implementation date	Last amended date
MILLISLE	Millisle	NIME	02-Aug-21	02-Aug-22
MINSTER SHEPPEY	Minster Sheppey	NDMSH	02-Aug-21	02-Aug-22
MOIRA	Maghaberry	NIMR	02-Aug-21	02-Aug-22
MOSTYN	Mostyn	WNMOS	02-Aug-21	02-Aug-22
NEWCASTLE STAFFS	CE Fibre Cities - NEWCASTLE UNDER LYME	WMNEW	02-Aug-21	02-Aug-22
PONTARDULAIS	Pontardulais	SWPDW	02-Aug-21	02-Aug-22
Poulton Le Fylde	Poulton-Le-Fylde	LCPOU	02-Aug-21	02-Aug-22
SAINTFIELD	NI Fibre Cities - Saintfield	NISD	02-Aug-21	02-Aug-22
Scarista	Isle of Harris	NSSST	02-Aug-21	02-Aug-22
SHIPHAY COLLATON	CE Fibre Cities - TORQUAY	WWSHIP	02-Aug-21	02-Aug-22
South Elmsall	South Elmsall	MYSEM	02-Aug-21	02-Aug-22
South Queensferry	South Queensferry	ESQUE	02-Aug-21	02-Aug-22
STEWARTON	CE Fibre Cities - AYRSHIRE	WSSTW	02-Aug-21	02-Aug-22
STRATTON ON THE FOSSE	Stratton On The Fosse	SSSOF	02-Aug-21	02-Aug-22
STRATTON ST MARGAR	CE Fibre Cities - SWINDON	SSSSM	02-Aug-21	02-Aug-22
SUNBURY ON THAMES	CE Fibre Cities - Sunbury	LSSUN	02-Aug-21	02-Aug-22
WARINGSTOWN	Donaghcloney	NIWT	02-Aug-21	02-Aug-22
Whalley	Whalley	LCWHA	02-Aug-21	02-Aug-22
Withernsea	Withernsea	MYWIT	02-Aug-21	02-Aug-22
WORTHING CENTRAL	CE Fibre Cities - Worthing	SDWCNTR	02-Aug-21	02-Aug-22

ADSL	Asymmetric Digital Subscriber Line
ATA	Analogue Telephone Adapter
CNI	Critical National Infrastructure
CP	Communication Provider
CRFS	Customers Ready For Service
EU	End User
GEA-FTTC	Generic Ethernet Access Fibre To The Cabinet
GEA-FTTP	Generic Ethernet Access Fibre To The Premises
HVS	Hosted Voice Select
ISDN	Integrated Services Digital Network
LLU	Local Loop Unbundling
MPF	Metallic Path Facility
NTE	Network Terminating Equipment
OTT	Over The Top
PSTN	Public Switched Telephone Network
SMPF	Shared Metallic Path Facility
SOGEA	Single Order Generic Ethernet Access
SOGFAST	Single Order G.Fast
SOTAP	Single Order Transitional Access Product
VDSL	Very high-speed Digital Subscriber Line
VOIP	Voice Over Internet Protocol
WLR	Wholesale Line Rental
WLR Product(s)	WLR3 Analogue, ISDN2, ISDN30, SMPF, SLU SMPF, Narrowband Line Share and Classic Products